
How to make Felt Peony

WORKSHOP



the-tsubaki.com



Materials

- Petal 1: 3.5cm x 3cm - 4
- Same colour as Petal 1 : 1cm x 5cm - 1
- Petal 2 : 3m x 5cm - 12
- Petal 3 : 4.5cm x 5.5cm - 6
- Petal 4 : 6cm x 6.5cm - 5

- Leaf 1 : 5cm x 5cm - 1
- Leaf 2 : 3cm x 7cm - 4
- Leaf 2 : 3cm x 8cm - 2

- Crepe Paper : 3cm x 6cm -1

- 18 gage green wire : 25cm
- 20 gage green wire : 10cm

Wool blend felt is recommended, but any types of felt works too.

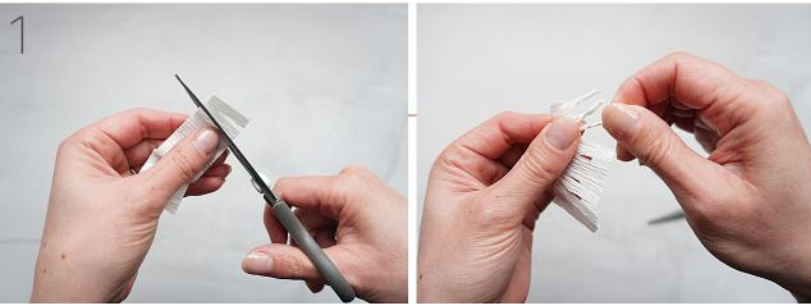
Tools

Hot glue gun and glue stick
 I use a Surebonder glue gun as it has the finest tip but it could be difficult to get depending on where you live. I recommend Beeway glue gun too. (Beeway® 20W Mini Glue Gun with 50pcs 7mm x 150mm)

Fabric scissors
 Sharp fabric scissors are essential to work with flower making. Fiskors micro tip scissors are recommended. They are comfortable to hold and not too big, most importantly they are really sharp.

Paper scissors
 Pen - Yellow / Orange

Cutting



Crepe Paper :

1. Make vertical cuts to create fringes.
Twist each of the notched parts.



Petal 1-4 :

2. Cut all the petals as shown on Picture 2. Make a 1cm cut from the bottom of the petals except Petal 4.

Petal 1 Petal 2 Petal 3 Petal 4

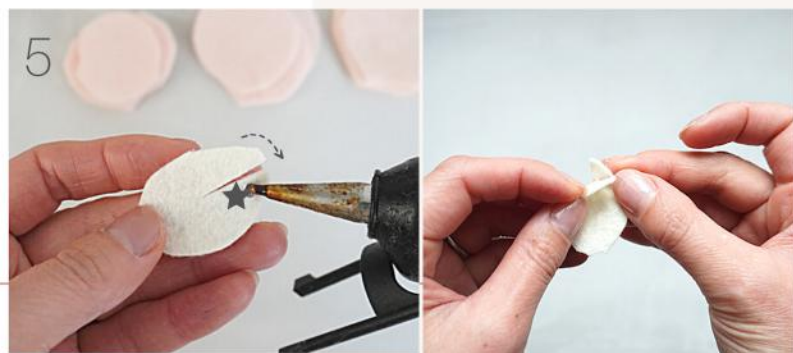


Leaf 1 - 5cm x 5cm :

3. Cut from a corner into the middle and repeat 3 more times. Turn it over and cut the same way as you just did.

Leaf 1 Leaf 1 Leaf 2 Leaf 3

Petals



5. Glue the ★ part and overlay the left part on top. Give the petals a three-dimensional effect,

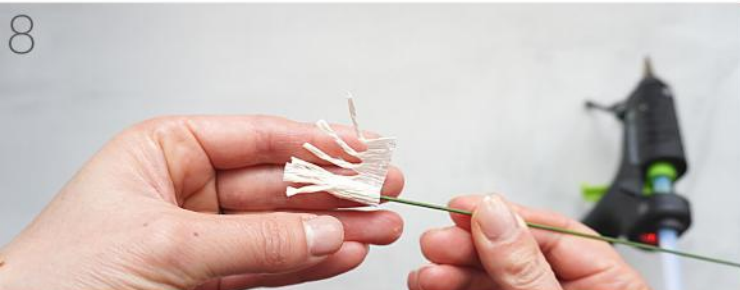
6. Do the same method for Petal 1-3.



Petal 1 Petal 2 Petal 3 Petal 4



Making a centre



7. Glue one side of the crepe paper and attach the tip of the floral wire (#18). Make sure it is attached firmly.



8. Glue the bottom line of the crepe paper and roll the wire to the end of the crepe paper.



9. Colour the tip of the crepe paper using pens.

10. Wrap the bottom of the crepe paper with the rectangle felt. This helps the centre bulge.



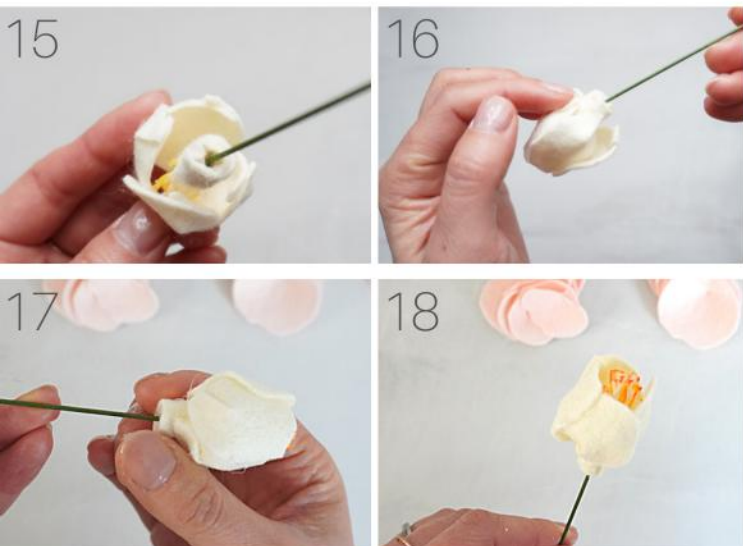
Petal 1

11. Glue the right side of Petal 1. Make sure the overwrapped parts are on the top. Try to make a curved shape as shown.



12. Glue the ★ part and connect to the other side. The 4 petals are the same in Picture 12 and 13.

14. You should have now made a cone shape with a hole on the top.



15. Cover the stem that you made at Picture 14 with Petal 1.

16. Glue the bottom of Petal 1.

17. Hold for a few seconds by using fingers to pinch tightly.

18. This is how it looks from the top.

Petal 2 - part 1

19. Glue the right side of a Petal 2.

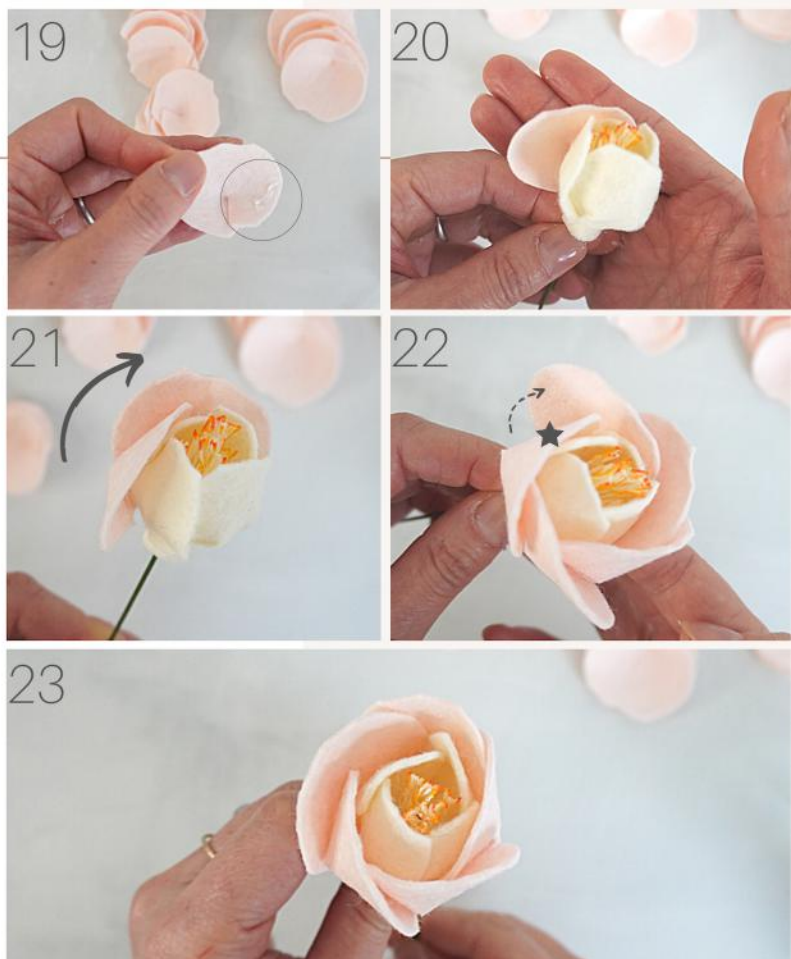
20. Attach it on the centre of the flower. Make sure to cover the overlapping part.

21. Glue the bottom of another Petal 2 and place it as you can see on Picture 21.

22. Repeat for the 3 more Petal 2. Now the flower head looks like Picture 22 and you can find a gap between the first and the last petal where ★ is.

Glue the ★ part and attach to the first petal.

23. Now you have made the second layer of the flower.





Petal 2 - Part 2

Repeat using the same method that you used for the previous layer.

24. Glue the right side of the pink petal and attach to the flower head. Make sure to cover the overlapping part.

25. Glue the bottom of the next Petal 2 and place it as you can see on Picture 25.

26. Repeat for another 5 petals and close this layer.

27. You have completed attaching all Petal 2 now. The flower looks like the Picture 27 from the bottom.

Petal 3

Repeat the same method from the previous layer. You use all the Petal 3 for this layer.

28. Glue the right side of a Petal 3 and attach it on the centre of the flower. Try to place it near to the stem.

29. Glue the bottom of the next Petal 3 and place it as you can see on Picture 29.

30. Repeat for the rest of Petal 3. Now the flower head looks like Picture 30.

Glue the ★ part and attach to the first petal.

31. Now you have made Petal 3.

32. See the difference between Picture 27 and Picture 32.



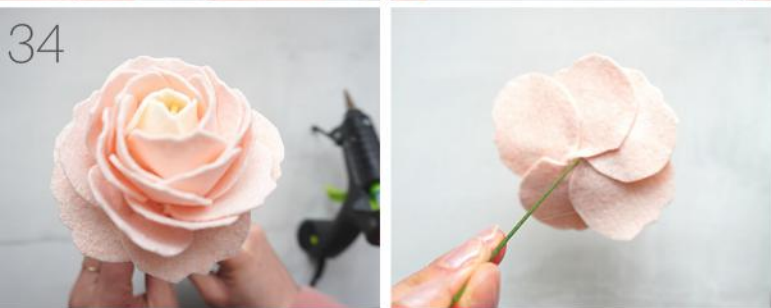
Petal 4



33. Attach Petal 4 and use the same method from the other layers.



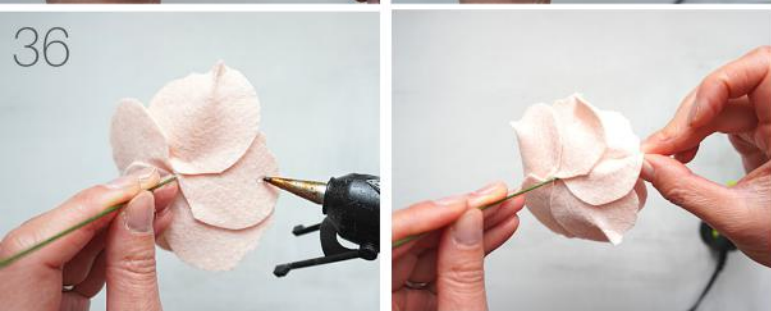
34. This is how the flower looks like from top and from the bottom.



35. Glue a little bit in the middle of a Petal 4 and pinch it. This gives the petal an unique texture.



36. Glue a little bit on the back of another Petal 4 and pinch it.



37. Complete steps 35 and 36 randomly on each Petal 4. Picture 37 shows how the flower looks like from the bottom.



38. Your flower looks like Picture 38 at this point.

Attaching the leaves

39. Glue the tip of Leaf 3. Attach it to the #20 wire and pinch it to secure. Repeat the other Leaf 3 on to the other end of the wire.

40. Glue the tip of Leaf 2 and pinch it. Do the same way for the rest of Leaf 2.

42. Glue the side of the Leaf 2 and place it to the side of Leaf 3 that you made at Picture 39. Do the same thing for the rest of Leaf 2. Now the leaves look like Picture 41.

42. Make a hole in the middle of Leaf 1 and put it through the stem. Glue Leaf 1 and attach it to the bottom of the flower head.

43. Wrap tightly the leaf wire that you have just made around the stem.



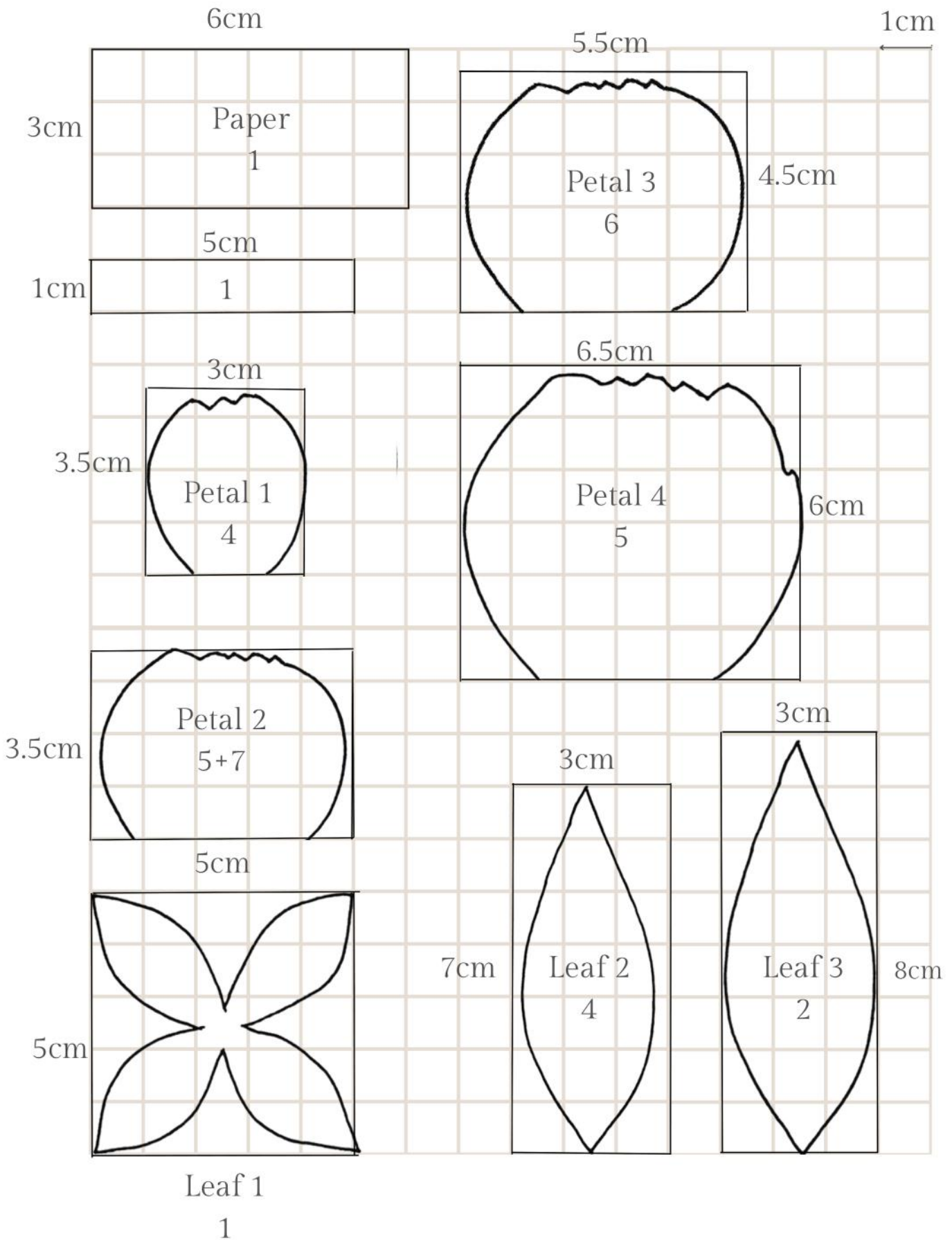
Finishing Touch

44. Make a small cut on each Petal 4 to make it look more natural and imperfect.

45. The flower head has now been completed!

TEMPLATE

FELT PEONY



DATE

Mood

YOUR JOURNEY

FELT FLOWER MAKING

GOALS

-
-
-
-

TO DO

-
-
-
-



UNLOCK YOUR CREATIVITY

Please share your work on Instagram
@the.tsubaki
I would love to see your flowers!

QUESTIONS?

info@the-tsubaki.com
<https://the-tsubaki.com>
@the.tsubaki

the-tsubaki.com